

RIDE ON!

CLUB  2025

SEA-DOO Can-am ALUMACraft MANITOUL



AGENDA

- CAN-AM MOTORCYCLES
- CAN-AM PULSE
- CAN-AM ORIGIN



can-am[®]



CAN-AM MOTORCYCLE

With people at the center of our development process we aimed at creating an experience that is...

EXCITING

Thrill, Fun and Smiles! Whether you're in the city or on the trail.

CLEVER

The whole experience is well thought with people in mind.

FRIENDLY

Get on and go! Intuitive and playful no matter the experience.



A rider wearing a helmet and dark jacket is seated on a Can-Am Pulse scooter. The scooter is positioned in front of a building with a railing. The scene is dimly lit, suggesting an urban or industrial environment.

can-am

PULSE

A playful, nimble and easy-to-ride commuter bike.

A rider in full protective gear is performing a wheelie on a Can-Am Origin scooter. The scooter is tilted vertically, and a large cloud of dust or dirt is kicked up from the rear wheel. The background is dark and indistinct.

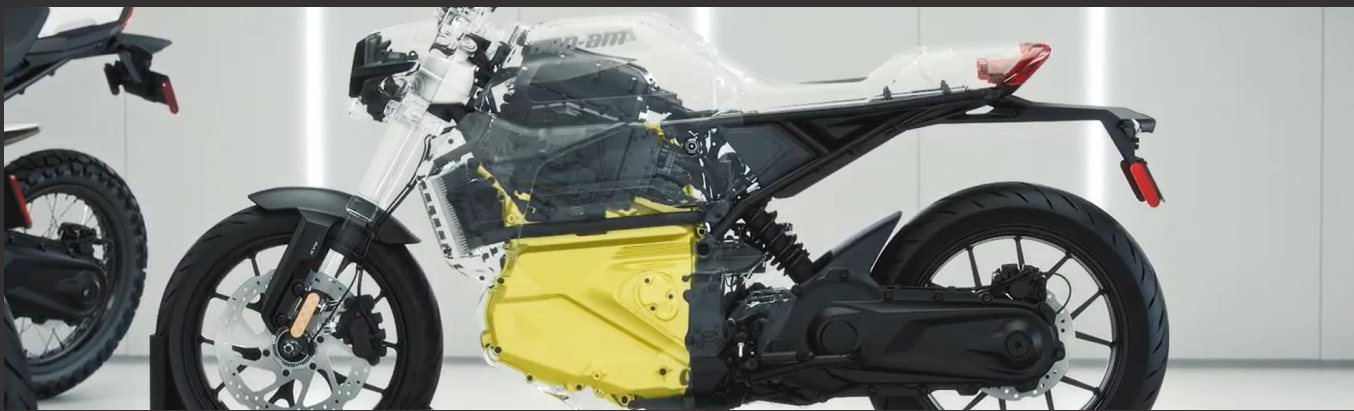
PHOTO SEB TO BE APPROVED

can-am

ORIGIN

As capable off-road as it is on – a true dual-purpose bike.

SHARED CORE AND KEY COMPONENTS



MOTOR

47hp
11kw / 35kw
A1 / A2 EU Licenses
Reverse & Regen

BATTERY

8.9 kWh
Liquid Cooled

CHARGER

6.6kW
Level / Type 1 & 2
20-80% in 50 min
(NA: Type 1 J1772)
(EU: Type 2 Mennekes)

FINAL DRIVE

Chain case
with silent chain

GAUGE

10.25 in.
Apple CarPlay

SHARED COMPONENTS: THE BATTERY

Rotax E-Power, optimized for everyday life and rigorously tested for all BRP Playgrounds.

CELEBRATE IT

Make it a key visual component of the Motorcycle. Make it **Yellow**, of course!



SHARED COMPONENTS: THE BATTERY

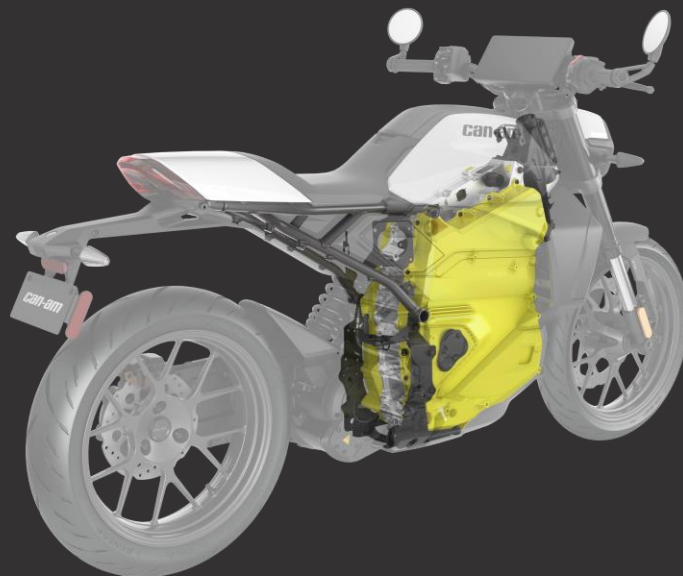
Rotax E-Power, optimized for everyday life and rigorously tested for all BRP Playgrounds.

CELEBRATE IT

Make it a key visual component of the Motorcycle. Make it **Yellow**, of course!

INTEGRATE IT

A structural battery allowed us to create a more lightweight architecture.



Can-Am Pulse: 390 lbs (177 kg)

Can-Am Origin: 412 lbs (187 kg)

SHARED COMPONENTS: THE BATTERY

Rotax E-Power, optimized for everyday life and rigorously tested for all BRP Playgrounds.

CELEBRATE IT

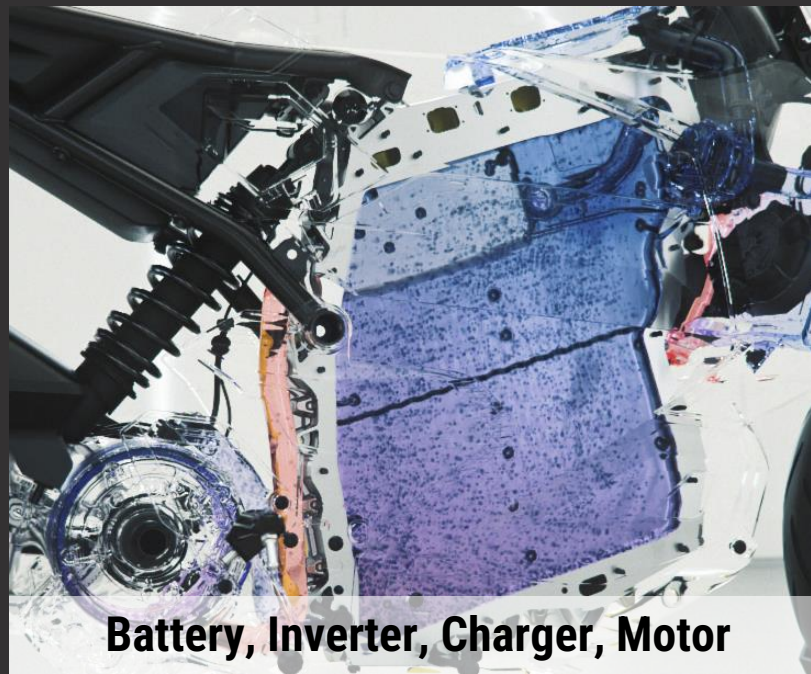
Make it a key visual component of the Motorcycle. Make it **Yellow**, of course!

INTEGRATE IT

A structural battery allowed us to create a more lightweight architecture.

OPTIMIZE IT

Liquid cool the whole system to optimize range, charging and limit derating.



Battery, Inverter, Charger, Motor

THE BATTERY

Liquid Cooled vs Air Cooled

EXTENDS THE BATTERY LIFE

Uniformize the temperature across the battery pack.

LIMIT THERMAL DERATING

Avoid performance degradation

FAST AND RELIABLE CHARGING

Start charging sooner and at a higher rate of charge



SHARED COMPONENTS: THE CHAINCASE



SILENT

Reduce unwanted noise from the final drive system

PROTECTED

Incased, the silent chain is protected from oncoming debris

LOW MAINTENANCE

Reduced maintenance with oil in the chaincase and an automatic tensioner

SHARED COMPONENTS: REGEN

PASSIVE REGEN

On throttle release the motorcycle will slow and recover energy

ACTIVE REGEN

You can actively perform a reverse throttle to slow more and recover greater energy

ADJUSTABLE

Passive Regen and the Active Regen are adjustable with Off/Min/Max settings



SHARED COMPONENTS: CONNECTIVITY



TOUCHSCREEN

10.25 in. touchscreen display with Over-the-air software updates via Wi-Fi

SHARED COMPONENTS: CONNECTIVITY



TOUCHSCREEN

10.25 in. touchscreen display with Over-the-air software updates via Wi-Fi

APPLE CARPLAY

An infotainment system that people know and trust that pairs with our BRP Vibe communication system

SHARED COMPONENTS: CONNECTIVITY



Battery Level



Estimated range left



Vehicle location



Estimated time to full charge

TOUCHSCREEN

10.25 in. touchscreen display with Over-the-air software updates via Wi-Fi

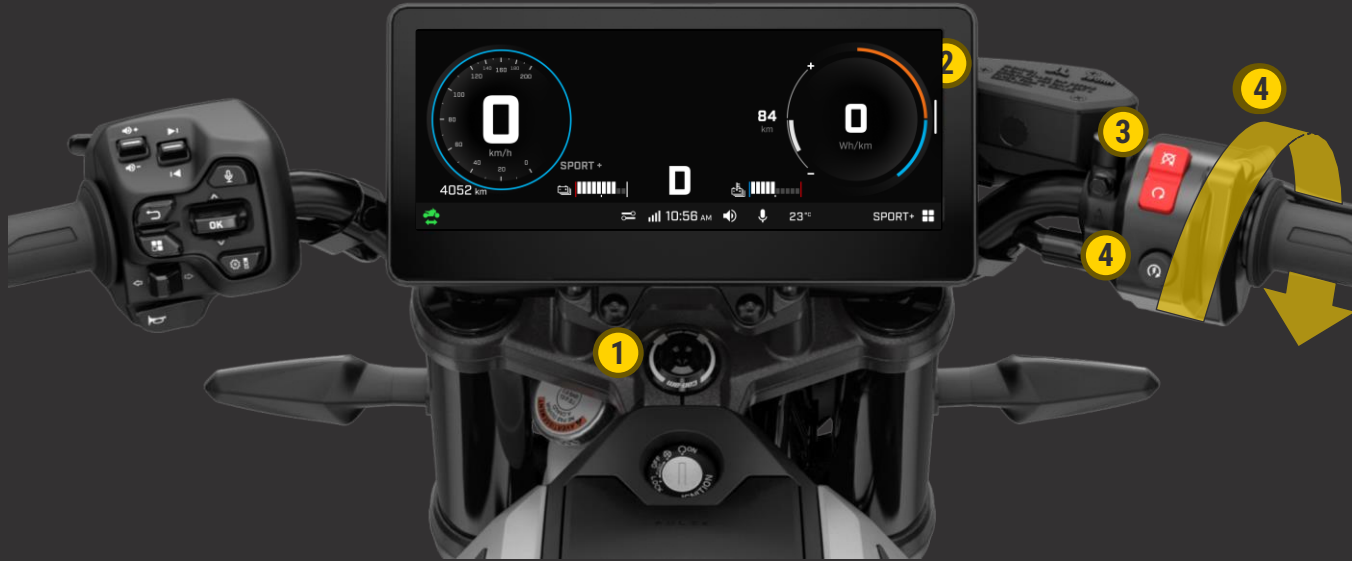
APPLE CARPLAY

An infotainment system that people know and trust that pairs with our BRP Vibe communication system

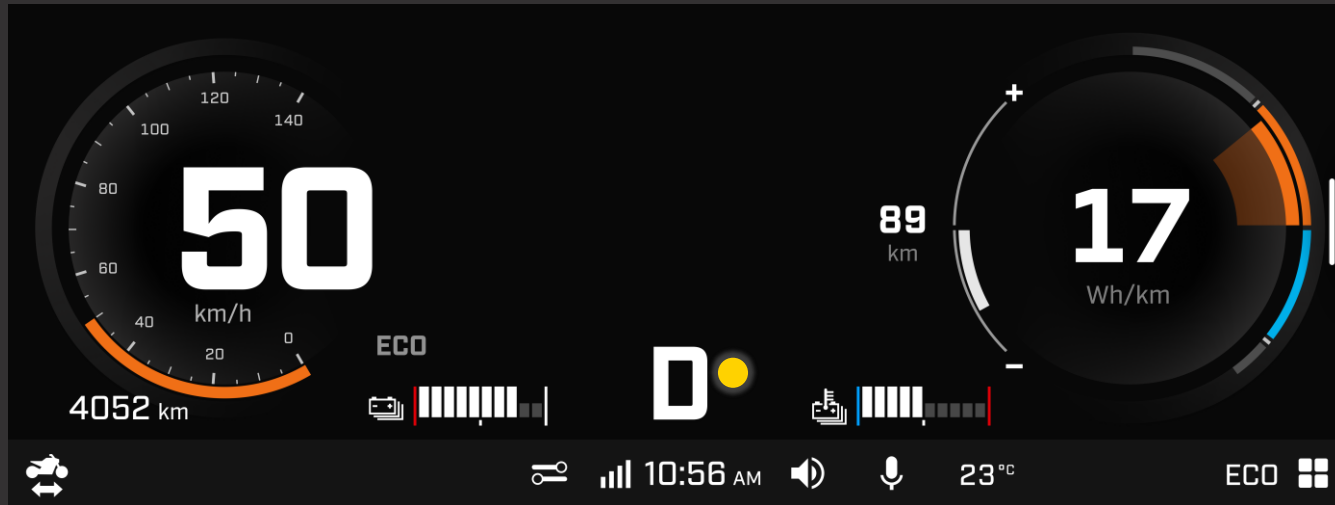
BRP GO!

Relevant last-known vehicle information to increase peace of mind and confidence

SHARED COMPONENTS: STARTING SEQUENCE



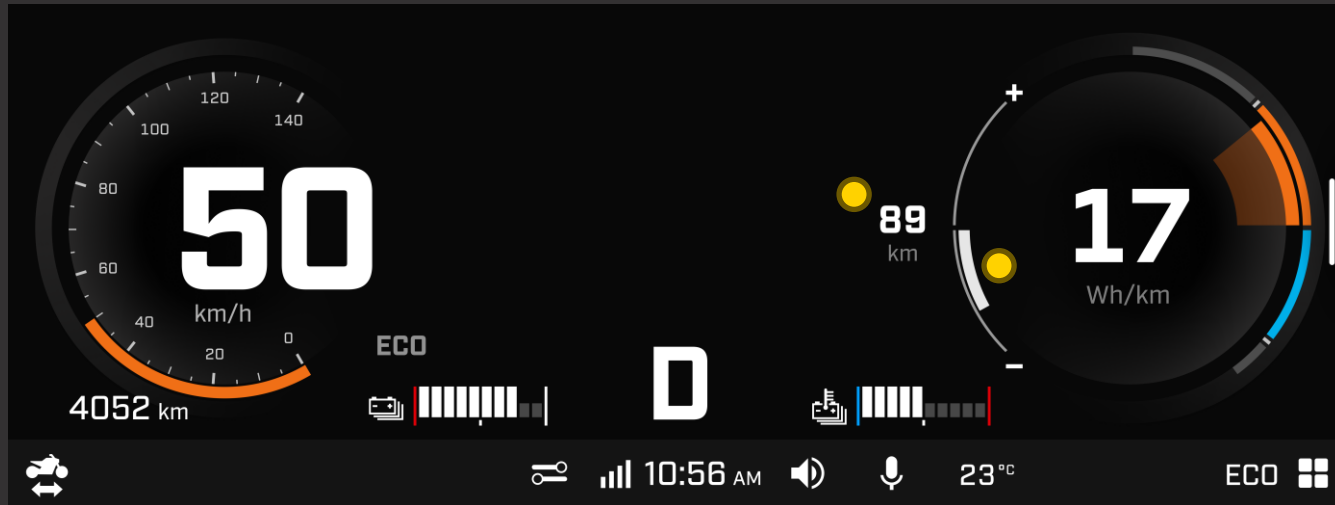
SHARED COMPONENTS: GAUGE



REVERSE FUNCTION

When in Drive, just long-press the start button to activate the reverse mode and then twist the throttle forward to start backing up.

SHARED COMPONENTS: GAUGE



RANGE ESTIMATE

The estimated range is calculated from your previous ride behavior

The range confidence indicator lets you know how your current riding style will impact the estimated range

INTRODUCING THE NEXT-GEN LINQ **NANO** ATTACHMENT SYSTEM

Secure your accessories in seconds using the new *LinQ Nano technology*

- No need for extra brackets or attachment points; it's already integrated within the vehicle
- Compact, easy, quick, and solid: LinQ Nano is our next-gen attachment system for ultimate integration

Gauge Cluster Area

Tank Area

Tail Area



CLUB  2025





can-am

PULSE



**CONNECT WITH THE
CITY'S HEARTBEAT**

can-am

ORIGIN



**ENERGIZE YOUR SPIRIT
ON EVERY TERRAIN**

can-am

PULSE



Can-Am Pulse is a well-balanced motorcycle, nimble and easy to maneuver.

It's playful, exciting and quick... while also being friendly and confidence-inspiring



CLUB  2025

can-am

PULSE



Can-Am Pulse excels in and out of the city, giving enough range for zipping around town



RANGE

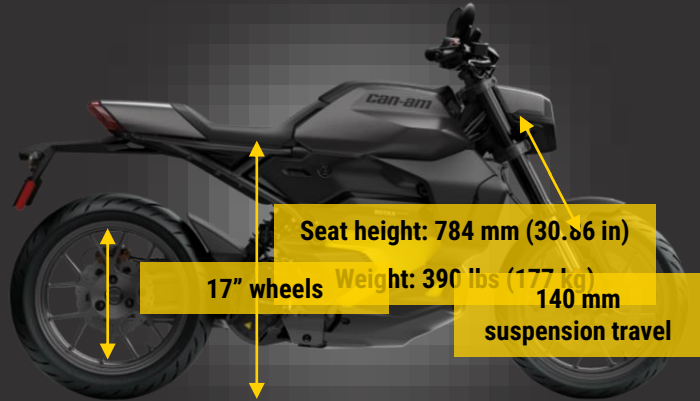
Combined / WMTC 130km (80miles)
City 160km (100miles)

POWER

Acceleration 0-100km/h (0-60mph): 3.8s
Top Speed 129km/h (80mph)

can-am

PULSE



Perfect in design and size to make every electric commute a joyride



Dunlop Sportmax GPR 300 tires

Sport tire with enhanced grip



KYB front suspension

Smooth ride with a sporty feel



Perfect size

Small but mighty

can-am

PULSE



Elevate your ride with features as clever as you



4 Drive modes

Switch your drive mode anytime

ABS and MTC

Confident riding

1.7L Glovebox

Convenient glove box with a USB port





CAN-AM PULSE '73

- Signature LED Lights
- Gauge Spoiler
- Vehicle Cover
- Can-Am Stripe Wheels
- Sterling Silver Paint
- Exclusive '73 Badging



CLUB  2025

can-am

PULSE



Bright White

Starting at \$ 13,999 USD
18,299 \$ CAD
€ 16,999 EUR



Carbon Black

+ \$ 500 USD
+ 700 \$ CAD
+ € 700 EUR

CLUB  2025

can-am

PULSE 



Sterling Silver

\$ 15,999 USD
20,999 \$ CAD
€ 18,999 EUR

can-am

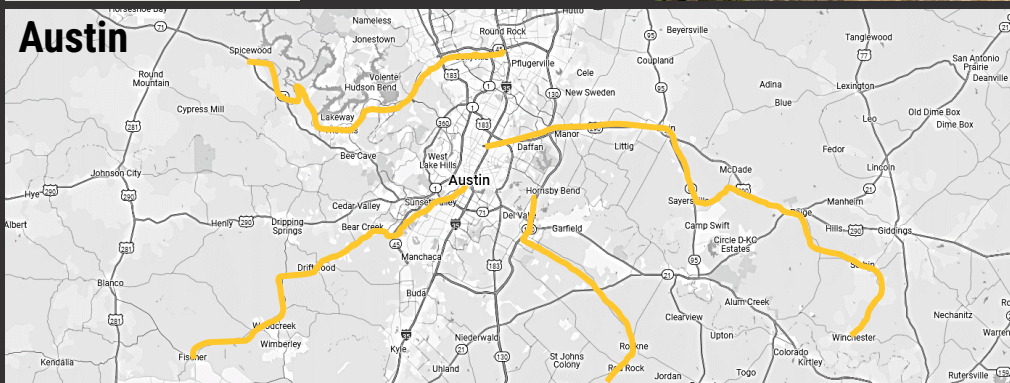
ORIGIN



Can-Am Origin is a nod to our origins while being so much more. As capable off-road as it is on-road.

It's a blast in the trails and handles great in the city.

CLUB  2025



can-am

ORIGIN



Can-Am Origin will take you through dirt, over asphalt and beyond.

RANGE

Combined / WMTC 115km (71miles)
City 145km (90miles)

POWER

Acceleration 0-100km/h (0-60mph): 4.3s
Top Speed 129km/h (80mph)

As much fun in the city as it is exploring trails



Perfectly crafted with off-road capabilities, the Can-Am Origin will never leave you behind

can-am
ORIGIN



**Dunlop
D605 tires with tubes**

Capable knobby tires



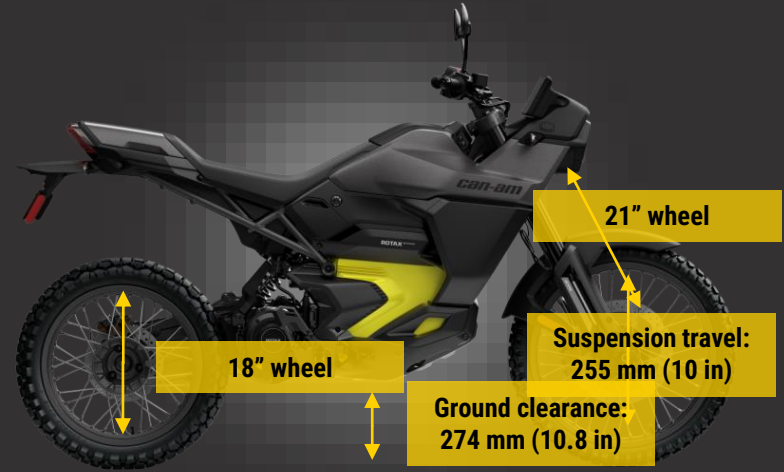
Full KYB suspension

Adjustable rear shock
(preload, compression and rebound)



**High ground clearance
and upright position**

Overcome any obstacle



Indispensable everyday features at the reach of your fingertips

can-am
ORIGIN



6 Drive modes

Two additional Off-Road modes



ABS and MTC

Adjustable on Off-Road mode



0.7L Glovebox

Hook up your iPhone to Apple Carplay with USB port





CAN-AM ORIGIN '73

- Signature LED Lights
 - Short Windshield
 - Vehicle Cover
 - Can-Am Stripe Wheels
 - Sterling Silver Paint
 - Exclusive '73 Badging
-



CLUB  2025

can-am

ORIGIN



Bright White

Starting at \$ 14,499 USD
18,999 \$ CAD
€ 17,599 EUR



Carbon Black

+ \$ 500 USD
+ 700 \$ CAD
+ € 600 EUR

CLUB  2025

can-am

ORIGIN 



Sterling Silver

\$ 16,499 USD
21,699 \$ CAD
€ 19,499 EUR



can-am



EXTENSIVE PORTFOLIO TO ELEVATE YOUR RIDING EXPERIENCE

25 accessories at introduction to cover both Pulse and Origin

PROTECT YOUR RIDE



RAISE YOUR COMFORT LEVEL



SECURE YOUR CARGO



ELEVATE YOUR RIDING EXPERIENCE



PROTECT YOUR RIDE

Aluminum Handguards

- Robust forged-aluminum construction with laser-etch Can-Am branding
- Provides protection to the rider's hands in the toughest conditions

Handguard Deflectors

- Installs in seconds on the Aluminum Handguards
- Strong polymer construction provides protection against dust, rain, small debris, etc.



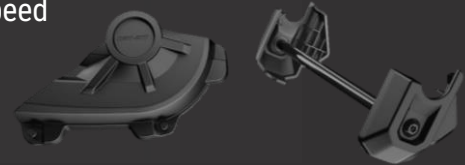
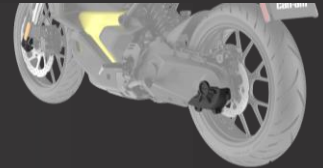
Adventure Side Guards

- Robust metal construction with carbon black powder coat finish
- Compatible with accessory LED Fog Lights



Axle Sliders Kit

- Protects key Pulse components against damage from low-speed drops
- Easy to install



RAISE YOUR COMFORT LEVEL

LinQ Adventure Windshield

- Installed in seconds with LinQ
- Easily adjustable with a spring mechanism in 2 positions: up and down
- Provides wind protection at helmet level



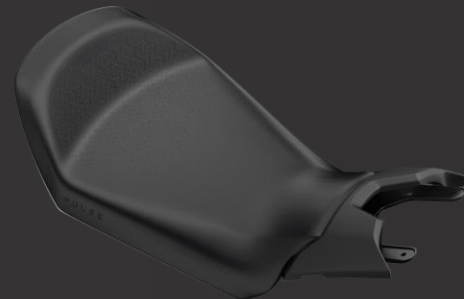
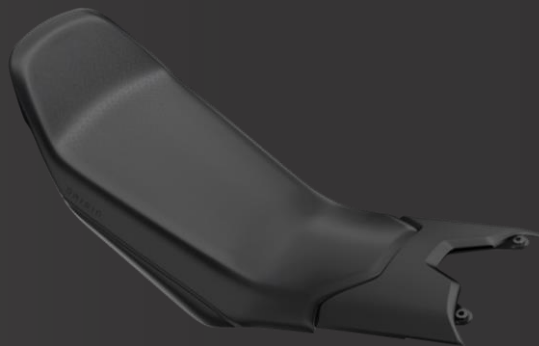
LinQ Sport Windshield

- Installed in seconds with LinQ
- Effective wind protection to the chest level while maintaining the vehicle's design
- Black tint for a sporty appearance



Comfort Seats

- Optimized shape, foam thickness and density improves comfort on any ride
- Unique Looks with premium materials and textures
- Precise fit & finish with embossed logos for a stylish look



SECURE YOUR CARGO

LinQ Top Case (36L)

- Installed in seconds using the LinQ anchors of the vehicle: no need for extra brackets
- Fully watertight, lockable polymer construction
- Fits any full-size helmet



LinQ Tank Bag (s)

- Installed and removed in seconds using the LinQ Nano anchor in the tank area: no straps, magnets or Velcro!
- Clear pocket to store a mobile phone
- Easily store smaller items: wallets, sunglasses, keys, etc.



SECURE YOUR CARGO

LinQ Saddlebags (22l)

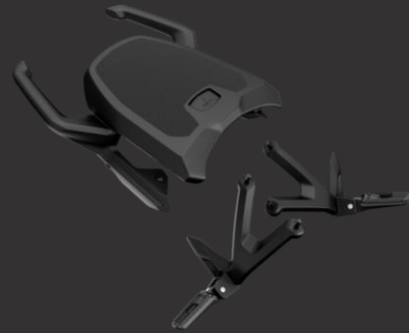
- Secured in place using the 4 LinQ Nano anchors in the tail of the vehicle. No need to purchase separate hardware
- Roll-top system: roll the saddlebag and then secure it with the lockable strap; this also locks the LinQ Nano anchors
- Comes with a watertight inner bag featuring a laptop pocket and a bright yellow interior to easily spot the items inside



ELEVATE YOUR RIDING EXPERIENCE

Pulse and Origin Passenger Seat and Footpegs

- Transforms the Pulse from a one-seater to a 2-seater
- Installed and removed in minutes (similar to Ryker)
- Comes with footpegs and robust aluminum handles
- Compatible with the LinQ Saddlebags (22L), but not the LinQ Top Case (36L)



Stock



LinQ Top Case (36L)



OR

Passenger Seat



ELEVATE YOUR RIDING EXPERIENCE

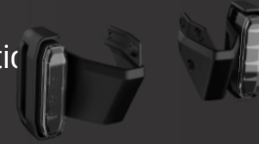
Heated Grips

- Easy installation
- 5 heating levels with visual integration in the gauge cluster



Fog Lights

- 800 Lumens each
- Easy plug & play installation with HUB integration



Mobile EVSE Level 1 Charging Cables

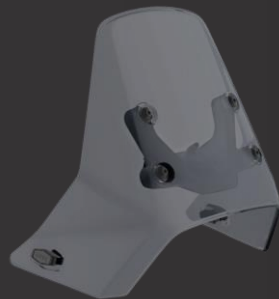
- Charges the Pulse and Origin from household wall outlets
- Built-in LED indicators
- Comes with a transport bag
- Adapted SKUs based on country of sale
- ROTAX E-POWER branding



ACCESSORIES FROM 73 PACKAGE

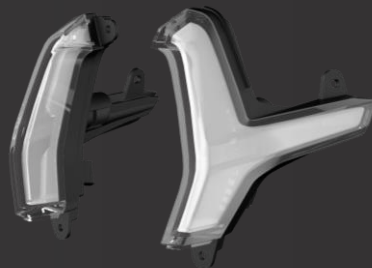
LinQ Windshield

- Easy installation with LinQ
- Dark tint for a sporty look
- Provides protection to the gauge cluster and gives the vehicle a clean look



Front Position Lamp

- Creates an unmistakable, distinctive look
- Automatically turns on & off smoothly and gradually
- Uses bright and energy-efficient LEDs



CLUB  **2025**